



TUGS TOWING & OFFSHORE NEWS SPECIAL

“BELLA”



On Thursday March 23 2023 the new build Damen Shipyards Hardinxveld yard number 571830, Ultra-shallow Multicat 3313 SD “[Bella](#)” was christened at the Dutch shipyard

[Bella](#) is an impressive Multicat 3313 that boasts exceptional features. With her dimensions of 32.80 x 12.50 meters, she has ample space to accommodate a variety of marine projects.

[Bella's](#) bollard pull is around 30 tons, making her an excellent option for towing, dredging, or anchor handling. Her cranes are exceptionally strong, ensuring that she can handle even the most challenging of marine operations.

With an ultra-shallow draft of only 1.85 meters, [Bella](#) can navigate through shallow waters with ease, making her ideal for projects in restricted areas. Whether for offshore wind support, salvage operations, or plough dredging, Bella is a versatile and reliable vessel that can tackle a wide range of marine projects with ease.



Advertisement

DAMEN**PROVEN DESIGN, DEDICATED VESSELS**

The Damen Multicat 3313SD **Bella** is one of the four vessel out of Herman Sr acquisition last month of ST Marine Support. This acquisition marks the expansion of Herman Senior's fleet from 8 to 12 vessels, including the new Damen Multi Cat 3313SD **Bella**

Interestingly, Herman Sr continues to operate a 100% Damen fleet of Shoalbusters and Multicats. ST Marine Support also had Damen workboats, i.e. the three Multi Cats **Odin** (Damen MC3013), **Nero** (Damen MC3013) and 35-metre **Auxilia** (Damen MC3515), all outfitted with strong cranes and winches.



Left to right: Erwin van Dodewaard, Jack van Dodewaard, Vasco Tammes (ST Marine Support), Chris van Dodewaard

Delivery just one year after the contract signing

On the 23rd of March 2022 ST Maine Support has signed the contract with Damen Shipyards for the delivery of this new Damen Multi Cat 3313 SD workboat. Based on the proven Multi Cat 3013, the 3313 is a new addition to Damen's Multi Cat. The new design will be relevant to any operator looking for a multi-purpose vessel optimised for dredging operations in very shallow waters.

The 33-metre Multi Cat 3313 SD **Bella** has a number of features that optimise it for ultra-shallow water dredging. The most significant of these is its ability to operate in depths down to 2.00 metres, an achievement even by Damen Multi Cat standards. The equipment package for this vessel includes substantial deck cranes fore and aft, anchor handling, towing and tugger winches, and a 40-tonne A-frame. The high quality accommodation sleeps nine personnel across four cabins. Three, fixed pitch propellers in Optima Ø 1600 mm nozzles deliver 25 tonnes of bollard pull and a speed of ten knots. Her basic functions are Anchor handling, dredger service, supply, towing, ploughing hose handling and survey

She is classed Bureau Veritas: I □ Hull • MACH Offshore Support Vessel; Tug (design bollard pull = 28 ton) Unrestricted navigation • AUT-UMS

Emission regulations: IMO tier II certified

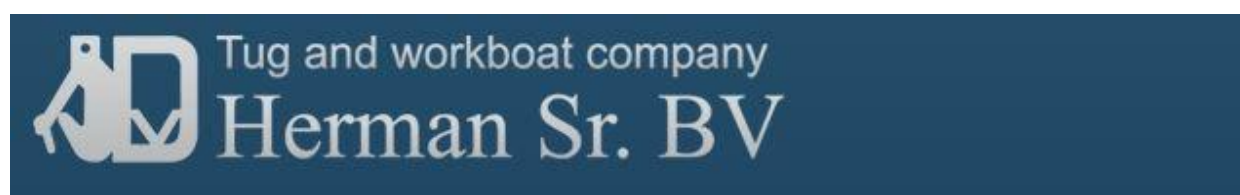
Nat. Authorities : Dutch flag, Unrestricted service



Arrival from Poland for outfitting at the Damen yard

(Photo: Willem Holtkamp)

Herman Sr. BV. is a third-generation, family-owned company based in Barendrecht, the Netherlands. Its fleet of Damen Shoalbusters and Multi Cats enables it to offer a wide range of marine services to its customers and it currently has vessels under contract in Latin America, the Middle East and Africa, as well as in Europe. The **Bella** is the seventeen vessel build by Damen





The Bella during at the Damen Hardinxveld yard



Sponsor lady of the tug Mrs Rolien Besangon, Partner of Jack van Dodewaard received the flowers

The MultiCat **Bella** was handed over by yard director Mr. Jos van Woerkum to the new owners Tug and Workboat Company Herman Sr. BV (Jack van Dodewaard)



Dimensions:

The “**Bella**” has a length o.a. of 32.80 meters. She is width 12.50 meters and has a maximum draft of 2.20 meters and a minimum draft of 1.85 mtrs. She has a grt. of 345 tonnes.



Imo number 9966207

Propulsion system:

The main power is provided by three Caterpillar C18 TTA Acert diesels engines with a total output of 1,797 bkW (2,409 bhp) at 2,100 rev/min D-Rating. This is delivered to a three screw arrangement of Promarin fixed pitch propellers turning in 1,600 mm Optima nozzles via Reintjes WF 370 – 6,053:1 gearboxes. The three rudders are Fishtail. Further the vessel has a hydraulic driven bowthruster of 294 kW (400 hp).

On trials, this configuration gave the vessel an estimated bollard pull of 30 tonnes and an estimated free running speed of 10.8 knots.



PS Caterpillar Main Engine



Auxiliary equipment:

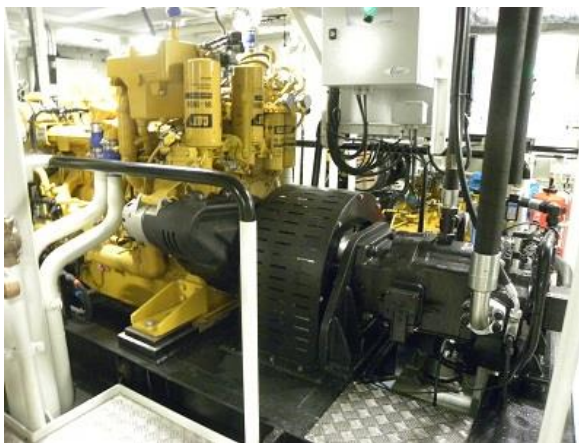
The two Generator sets are Caterpillar C04.4, 86 ekW, 107 kVA each, 50 Hz. One Hydraulic power set of Caterpillar C18 TA, 533 kW, 1800 rpm. The Azcue CA80/20A fuel transfer pump has a capacity of 50 m³/hr at 4.75 bar. The Azcue CA80/20A fresh water pump has a capacity of 50 m³/hr at 4.75 bar. The Westfalia OTC2 fuel oil separator has a capacity of 1,150 l/hr. Further a Sewage treatment system of Selmar Blue Sea 3500 and her cooling system is with boxcoolers



PS Caterpillar generator sets



SB Caterpillar generator set



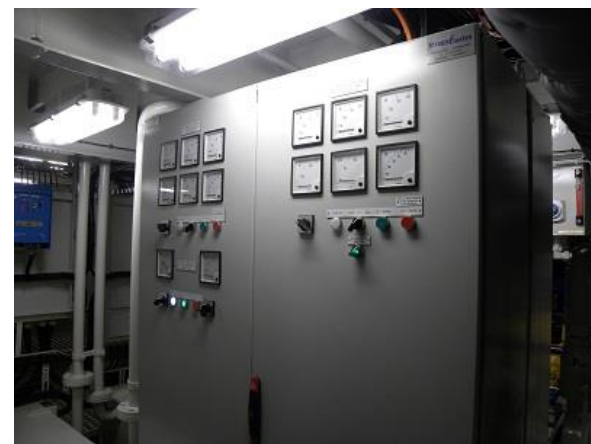
Caterpillar diesel-hydraulic pump set

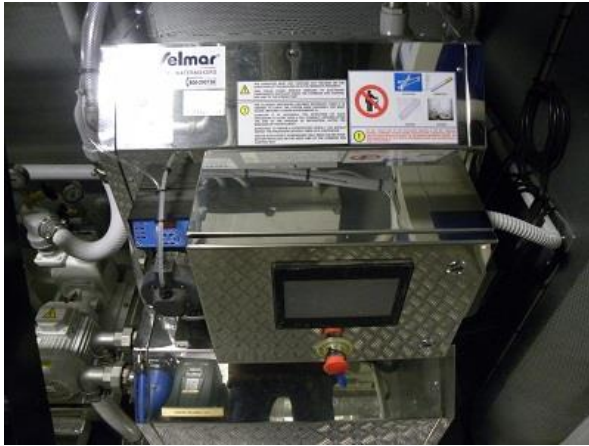


Hydraulic powerpack



Main switch board





Freshwater maker



Air compressor set

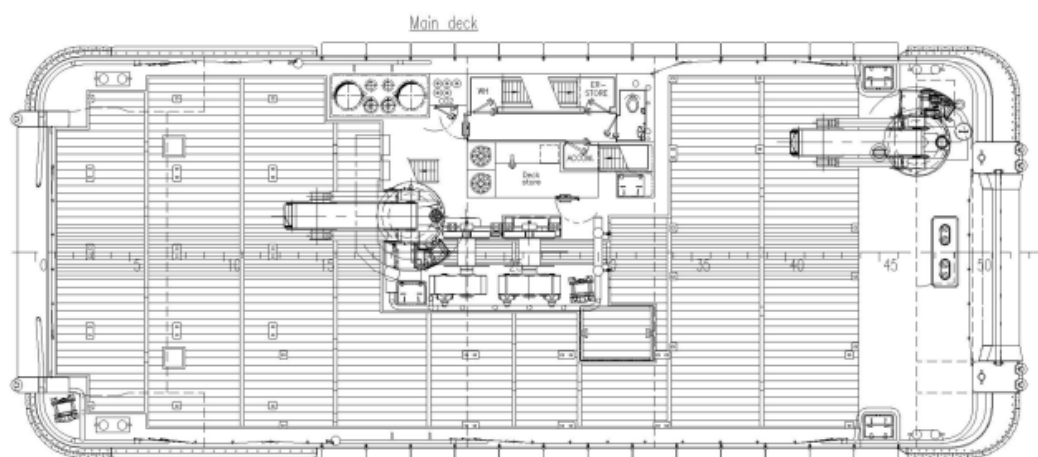


Pump arrangement



Fuel oil separator

Deck layout:



The vessel has the following deck equipment. One Pool anchor HHP of 400 kg with a 19mm stud-link anchor chain 275 and one spare anchor. The anchor winch is from Kraaijeveld KAB-1-H-19D and hydraulically driven. The Anchor Handling winch mounted on the work deck is from Kraaijeveld type KA-30/2-H-TR and has a pull capacity of 100 ton at 8 m/min and 20 ton at 32

m/min with a BHL of 150 ton at first layer and a wire capacity of 200 meters and with a diameter of 48 mm. The towing winch also mounted on the work deck is from Kraaijeveld type KA-20-H-TR and has a pull capacity of 40 tons at 12 m/min and 20 ton at 24 m/min with a BHL of 100 ton at first layer and a wire capacity of 650 meters and with a diameter of 36 mm. The two Dromec HPV-12000 tugger winches have a capacity of 12 tons at 5 m/min. A bow roller of 1200 mm with a SWL 130 ton and a length 6 meters. The forward HS-Marine AKC 410 HE2 deck crane has a lifting capacity of 22.8 ton at 13.1 meter and 36.9 ton at 8.4 meter and the aft HS Marine AKC 410/15.5 HE3 deck crane has a lifting capacity of 17.1 ton at 15.5 meter and 34 ton at 8.7 meter with a winch kit of 10 ton. The maximum deckload is 8 ton/m² with a free deck space of 200 m². A capacity for nine containers of 20" and one of 10" in one time.



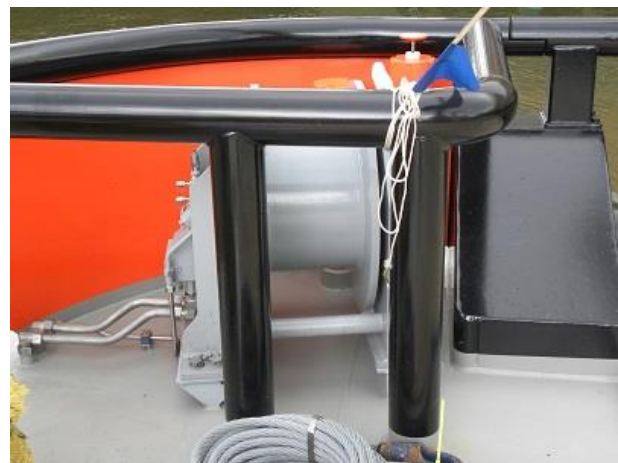
Towing Winch



Anchor handling winch

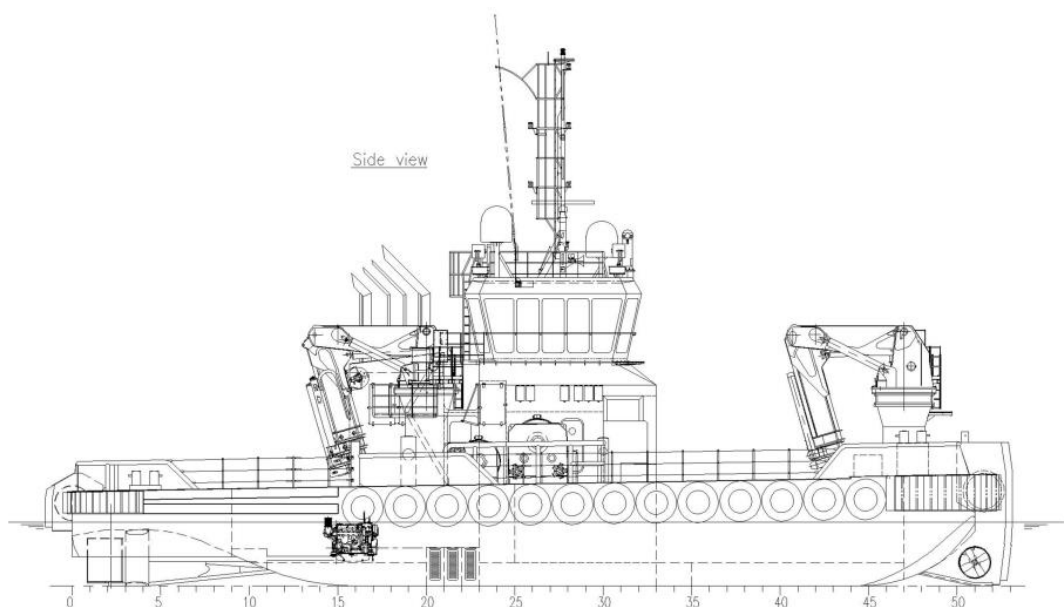


Tugger Winch Fore Ship



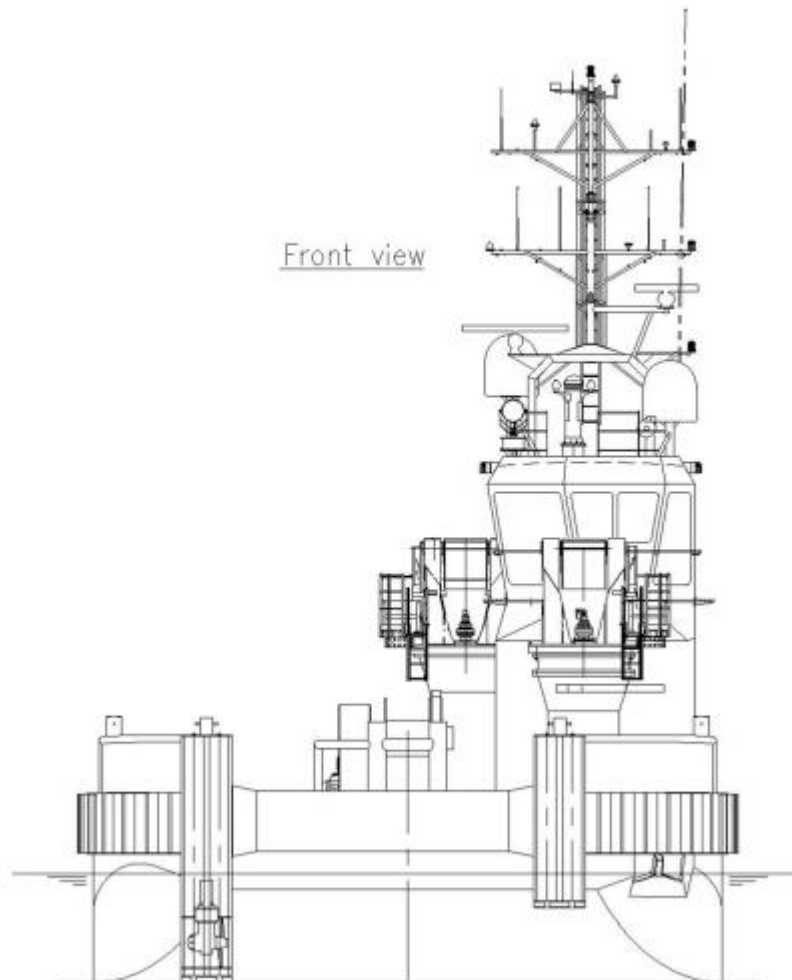
Tugger Winch Aft Ship





Tank arrangements/capacity:

The tug consist tanks for the following liquids; Fuel tanks capacity of 125.00 m³; Fresh water tanks with a capacity of 40.00 m³; Lubrication oil with a capacity of 2.40 m³; Hydraulic oil with a capacity of 4.20 m³; Sewage tank with a capacity of 12.00 m³; Dirty oil tank with a capacity of: 3.80 m³; Bilge water tank with a capacity of 3.80 m³ and a Technical water tank with a capacity of 80.0 m³

**Accommodation:**

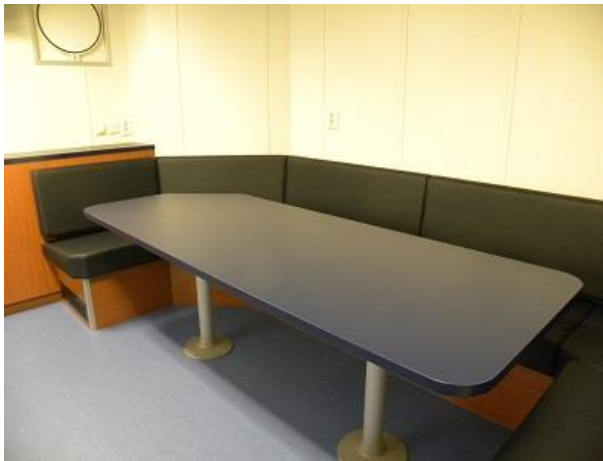
The tug has been outfitted to the highest standards heated and air-conditioned living quarters for nine (9) persons, consisting of three (3) single officer bed room cabins and three (3) double crew bed room cabins. A combined galley and mess with adjacent store and sufficient sanitary facilities and all according to ILO regulations. The technical space is fitted below wheelhouse.



Single bedroom cabin



Double bedroom cabin



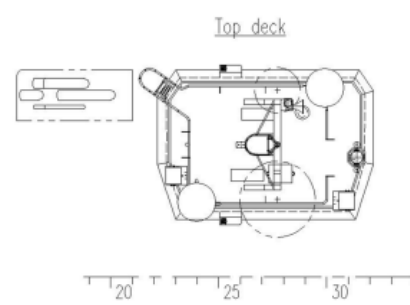
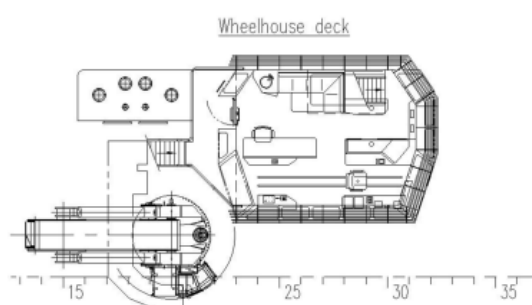
Messroom



Galley

Nautical and Communication Equipment:

The bridge is equipped with extensive nautical and communication equipment according GMDSS: Area 3; Two Searchlights Pesch 2000W; One Magnetic Compass Cassens & Plat, Reflecta 1; One Radar system Furuno FAR-2218BB; One Radar system Furuno FAR-8065; One ECDIS Furuno FMD3100; One V-Sat 1x Cobham Sailor 800; One TVRO system 1x Cobham, Seatel 80; One Gyro compass Simrad GC-80; One Autopilot Simrad AP-70; One Echosounder Furuno FE 800; One Navtex Furuno NX-700A; One AIS Furuno FA 170; One SSB Cobham Sailor 6310; Two Inmarsart C Thrane & Thrane sailor LT3100; Two VHF / DSC Cobham Sailor RT6222; One GPS Furuno SC-70; One Speedlog Skipper EML-224; One Intercom Phonetech CIS3101; One Watch alarm Furuno BR-500; Two Handheld VHF sets Entel HT649/P2 and One WIFI Peplink MX BR1.



One chair is fitted on a sliding rail at starboard side for manoeuvring consoles of the bridge. The bridge chart table is found at the portside aft bridge. The very spacious bridge has a beautiful good looking layout with an around view over the fore deck, aft deck and sides. This Damen Multicat 3313 SD is again built to the highest standards.



Starboard Aft Bridge Console with Chair



Starboard Fore Ship Bridge console



Ceiling Bridge Console



Portside Diner Table – Chart Room



Baptism scissors



Sponsor Lady & Owner Jack van Dodewaard



Bottle prepared for the christening



Bottle of Champagne breaks on ship's hull



Change flag from yard to owners



Proud Family Jack van Dodewaard - Tug and workboat Company Herman Sr. B.V.



The godmother of the [Bella](#) Mrs Rolien Besangon received a gift from the Damen Hardinxveld director Mr. Jos van Woerkom

Director Tug and Workboat Company Herman Sr. Mr. Jack van Dodewaard thanks the yard in his speech for the excellent corporation and the delivery of this beautiful vessel.





For each of the owners and the captain a painting of the **Bella**



And a special gift of Bella the Bear for the Captain

Towingline thanks the owners – Tug and workboat company Herman Sr. B.V. – Barendrecht and the yard – Damen Shipyard Hardinxveld-Giessendam for their hospitality and invitation for the christening ceremony of the MultiCat 3313SD “**Bella**”



Towingline/Tugs Towing & Offshore News wish the vessel, the owner and her crew in all-weather work circumstances safe voyages



WEBSITE

[HTTP://WWW.TOWINGLINE.COM](http://www.towingline.com)

ARE YOU ALSO INTERESTED IN THE FREE TUGS TOWING & OFFSHORE NEWSLETTER. PLEASE VISIT THE WEBSITE [WWW.TOWINGLINE.COM](http://www.towingline.com) AND SUBSCRIBE YOURSELF FOR FREE
