

# SCRIBBLINGS



*From Bill Miller*

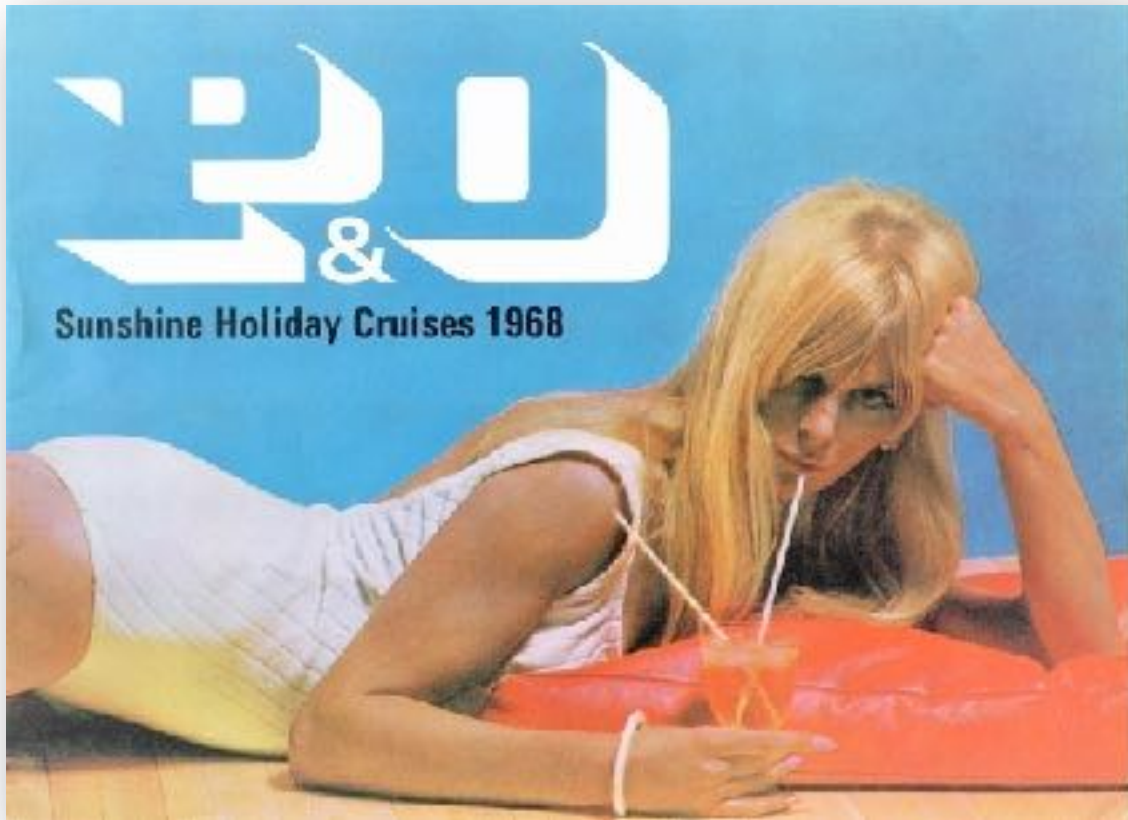
*Mar 2022*

**Wed Mar 23<sup>rd</sup> At sea, bound for New York:** More memories! “My very first cruise was on P&O, onboard the *Oronsay*,” recalled fellow passenger Esme Prestwick. “It was almost 60 years ago and a two-

week voyage from Southampton to the Mediterranean. My family was hooked – we just loved cruising. My father quickly gave up the British seaside or summer trips up to Scotland – P&O was the way to go! There were so many memorable points: English breakfasts, ‘elevenses’ [tea at 11am coupled with a plain biscuit], naps for an hour each afternoon, lovely dinners and afterward very nice shows or cabaret artists. It was all British passengers back then – and people from every station & status of life, from proper old colonials, retired corporate types to budgeted retirees and even seaside landladies. We’d have lots of time on deck, seated around the pool or in the shade of the boat & promenade decks. P&O had those seaside chairs with the sling canvas seating. I also seem to recall afternoon tea being held in the ship’s restaurant. The captains & officers were all British and the stewards & waiters a mix of British and Indian. Some had been with P&O for years, even decades and for some of the Indians it was a long family affair – their grandfather & fathers had served in P&O ships.”



Esme added, “The cruises themselves were great, colorful, exciting adventures. I remember ports such as Lisbon, Madeira, Barcelona, Ibiza, Naples, Athens & Venice. We also went north on occasion – to Norway & the fjords, Copenhagen & Stockholm. We cruised in the *Orcades*, *Himalaya*, *Oronsay* [seen above], *Orsova* & *Arcadia*. Each ship had a slightly different onboard personality, something you liked or remembered especially about each. But they were each wonderful in their time. And I remember they smelled of soap – a very fresh, very clean smell.”



Esme concluded, “We later moved over to the bigger *Oriana* & *Canberra*. They were much more spacious, had greater outdoor decks and were more modern in décor. They were quite different, of course, but I can’t say I liked one over the other. Both had their loyal fans. I was on the *Canberra* in 1997, her final season. It was sad to see her go – and in ways the old P&O Company went with her. Things were changing – and quickly – to the likes of the new *Oriana* and *Aurora* – and these days to the gigantic *Iona*.”

**LANDRHA**

Line	Land Rover	Land Rover
Country of Origin	United Kingdom	United Kingdom
Year Built	1988	1988
Builder	Harland & Wolff	Harland & Wolff
Operator	Land Rover	Land Rover
Home Port	London	London
Length	180m	180m
Beam	28m	28m
Max Speed	22 knots	22 knots
Capacity	1,200 passengers	1,200 passengers
Engines	2 x MAN	2 x MAN
Power	10,000 kW	10,000 kW
Service Area	UK, Ireland, France	UK, Ireland, France



**MILANA**

Line	Land Rover	Land Rover
Country of Origin	United Kingdom	United Kingdom
Year Built	1988	1988
Builder	Harland & Wolff	Harland & Wolff
Operator	Land Rover	Land Rover
Home Port	London	London
Length	180m	180m
Beam	28m	28m
Max Speed	22 knots	22 knots
Capacity	1,200 passengers	1,200 passengers
Engines	2 x MAN	2 x MAN
Power	10,000 kW	10,000 kW
Service Area	UK, Ireland, France	UK, Ireland, France

