

Philip Simons is a member of the WSS South Coast branch and a founder member of the WSS Small Craft Group in 1993. He has kindly sent photos of various vessels seen in two visits to Felixstowe Ferry in June 1999 and May 2018.

Many have interesting histories and a lot of course are unknown. If you see anything familiar and know any information about the various vessels. Please send it to me by email and I will pass on to Phil. Apologies to Phil for taking so long to put this together.

All photos by Philip Simons unless otherwise credited

Vessels are presented in alphabetical order.

Derek Sands



Seen in May 2018. Houseboat formerly the fishing vessel “**Allison Theresa**” HH99. She was built in 1970.

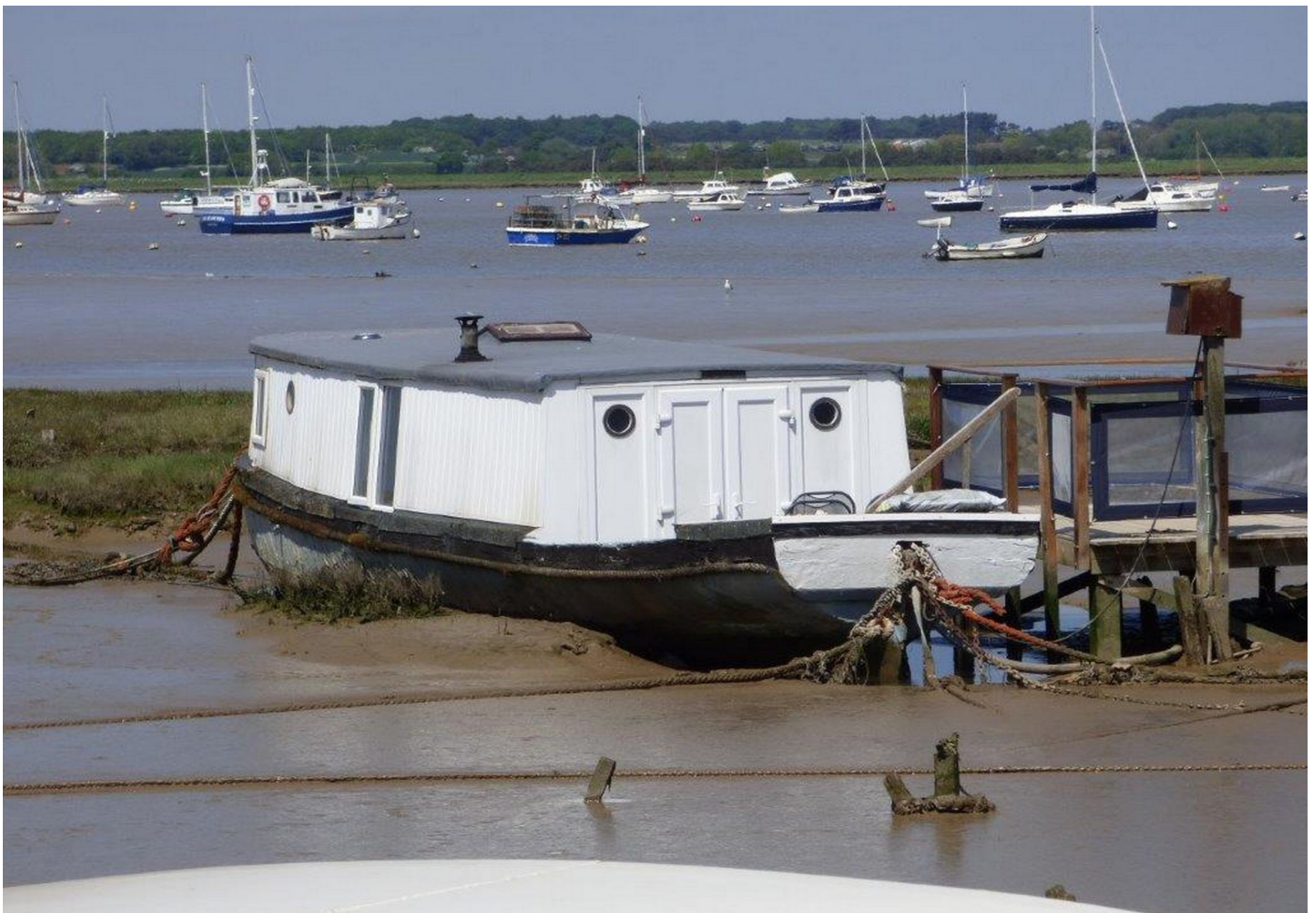


“**Alouette**” formerly ex R.N.L.I. Official number 520 “**Horatio Brand**” of 1903. A self-righting pulling boat, also note the hulk of a sailing vessel in the background. Date of photo 19/06/99. Below she is seen ashore and under refurbishment in May 2018. Stationed at Hartlepool 1903-1924, sold by R.N.L.I. In 1924 Broken up February 2022.

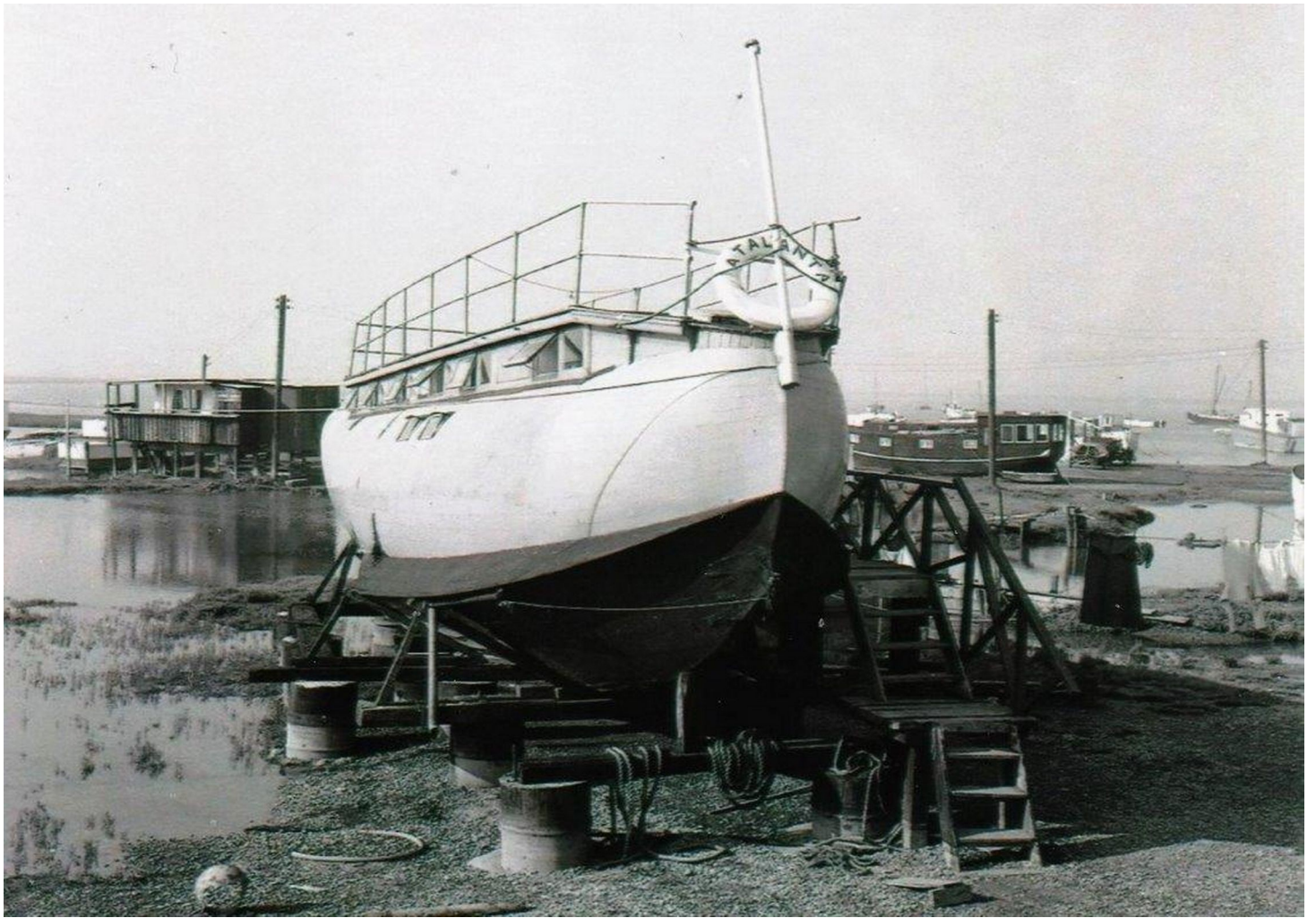




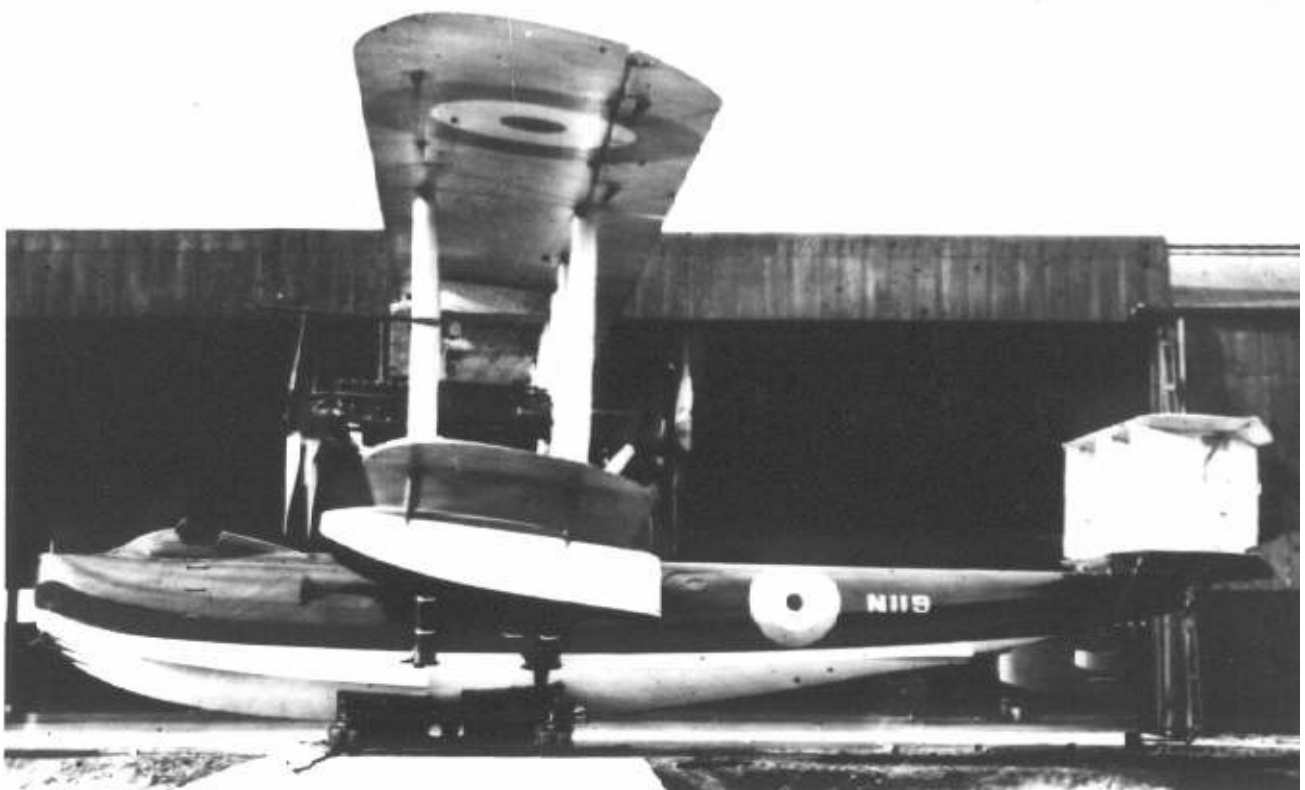
“Blue Fin” a former workboat seen in May 2018.



“Creekmore” an old Admiralty 52.5ft HL(S) seen in May 2018



“Atalanta” Fairy Atalanta N119 (unknown date and photographer). Below she is seen in her original form as a “Flying Boat”. She was completed in 1921 with the hull built at Hythe, Hampshire by May, Harden & May. Powered by four Rolls Royce 650hp Piston engines. The hull was delivered to Lytham St Annes for assembly. She first flew in 1923. Information and photo from Wikipedia (commons)





Another photo of the “**Atalanta**” just before being broken up 11th May 1963. (Photographer unknown)



“**Hippo**” a former Admiralty 30ft Pulling and Sailing Cutter seen on 19/06/99.



“Jurassia” ex RNLI o.n. 627 “Kate Walker” of 1912, a 35ft Self Righter seen on 19/06/99



Seen in May 2018 now reverted to her previous name and looking quite different to above is “Kate Walker”



“Kitty” 32ft Pulling & Sailing Cutter & (left) Shanakiel 52.5ft HL(D) 41104 Felixstowe Ferry 19-6-99 (Nick Hall)



“Kitty” ex Admiralty 32ft Pulling and Sailing Cutter at Felixstowe Ferry, May 2018



"Lynmouth" ex RNLI o.n.558 Prichard Frederick Gainer of 1906 at Felixstowe Ferry May 2018



"Mirakel" ex RAF 40ft ST 461 at Felixstowe Ferry May 2018



“Norbert Mud” ex ship's lifeboat at Felixstowe Ferry May 2018



From Phil's collection “**Nore**”, a 50ft hard chine Motor Launch. Possibly a former PLA vessel. She was at Woodbridge in the 1930's and seen here as a houseboat at Felixstowe Ferry in July 1988. By June 1999 she was a hulk and an imploded hulk in May 2018. Below she is seen hulked in June 1999. *(Photo by the late Nick Hall)*



By May 2018 the hull had imploded and she was a complete wreck see below.





The small Glass reinforced plastic Cabin Cruiser, “**Oleander**” seen in May 2018.



A former ships lifeboat “**Potomus**” seen in May 2018, with in the next photo a tableau of Hippo’s and a diver!



The catamaran **"Reedwarbler"** either a former ferry or survey vessel seen in May 2018.

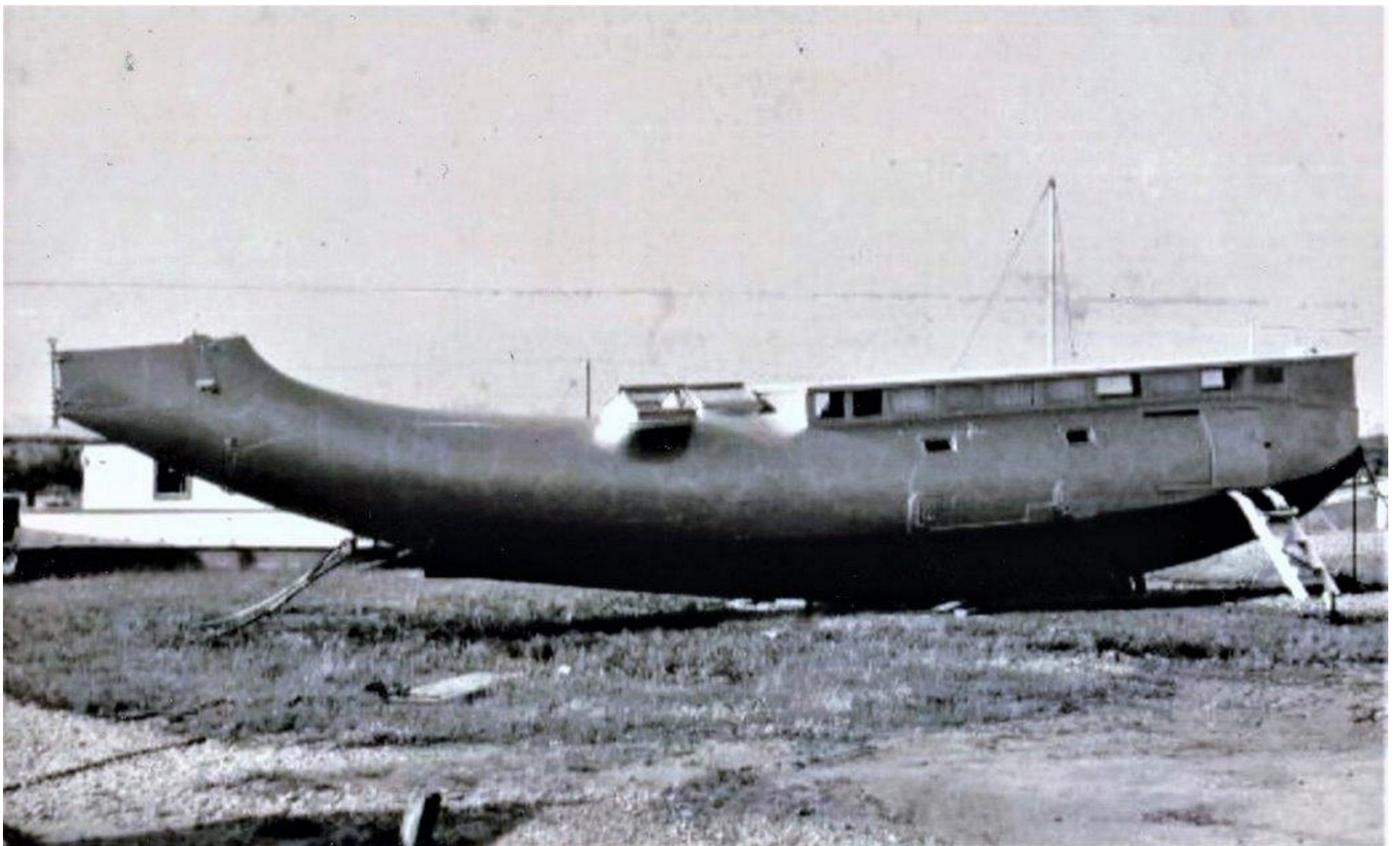


Tucked away alongside the **"Reedwarbler"** is a GRP motor cruiser called **"Seniora"** in May 2018



Former Admiralty 52.5ft HL (D) 41104 **"Shanakiel"** in July 1999. In the foreground an ex Admiralty LC(A. (Landing craft assault) (Photo by Stuart Emery (13)

Below she is seen in May 2018 (Photo by Phil Simons)



The hull of a flying boat at Felixstowe ferry date and photographer unknown. It was formerly a Supermarine Southampton 1 N9899. Below it can be seen under restoration at RAF Museum, Hendon date unknown. (14)



Un-named 41.5ft LCA (Landing craft assault) at Felixstowe ferry, one of more than 2,000 built over 371 were lost during hostilities in WW2. (15)



Un-named ex Ship's Lifeboat at Felixstowe Ferry May 2018



Un-named GRP Broads type Motor Cruiser at Felixstowe Ferry May 2018



Un-named GRP motor cruiser at Felixstowe Ferry May 2018



Un-named large sailing yacht hull at Felixstowe Ferry May 2018



Un-named ship's lifeboat at Felixstowe Ferry May 2018



Un-named wide-beam Narrow Boat at Felixstowe Ferry May 2018



Un-named wooden Motor Cruiser



“Whisper” Admiralty 30ft Pulling & Sailing Cutter 378 of 1915 at Felixstowe Ferry 19-6-99