

BUOYS FROM BRAZIL

**Pictorial Record for Mersey
Waterfront Ship Enthusiasts and Onlookers**



MIA DESGAGNES '17/12061, a Chemical/Products Tanker shown inbound in the Eastham Channel on 19/1/23. Canada flag. Transport Desgagnes Inc. Built in Turkey. IMO 9772278. Photo David Shore.

WHAT'S IN A NAME?

Buoys from Brazil

Brazil is the name of a channel marker buoy moored in the river off New Brighton.



Egg Bound

Egg is the name of a channel marker buoy moored in the river Mersey near Egremont.

EGG BOUND NEWS

Editor – Alan Lee, email: ships@buoysfrombrazil.co.uk

During January 2023

Cruise ship - BOREALIS visited..

TOPAZ TANGAROA '18/6133, an Offshore Supply Vessel arrives at Cammell Laird for conversion. IMO 9792539.

CLANSMAN '98/5499, Calmac Passenger/Ro-Ro Ship arrives at Cammell Laird for a refit. IMO 9158953.



AURORA SPIRIT '20/85329, a Shuttle Oil Tanker shown from New Brighton outbound for Brofjorden, Sweden from Tranmere Oil Terminal on 12/1/23. Norway International flag. Aurora Spirit AS (Teekay Corporation). Built in South Korea. IMO 9837169.

Photo Dave Pearson.



BELHAWK '15/34815, a Bulk Carrier shown from New Brighton inbound for Liverpool on 23/1/23 with Animal Feedstuffs from Argentina. Norway International flag. Belships ASA, as managers. Ex-STAR PATHFINDER-'21. IMO 9748461.

Photo Dave Pearson.

BOKA ATLANTIS '11/8691, a Diving Support Vessel shown from the public footpath, berthed in East Float, Birkenhead on 17/1/23. Marshall Islands flag. Boskalis Subsea Services Ltd.

Ex-NOR ATLANTIS-'18, HARKAND ATLANTIS-'16, IREMIS ATLANTIS-'13, GULMAR ATLANTIS-12. IMO 9441221.

Photo Alan Lee.





BOYNE '07/3974, a Chemical/Products Tanker shown from New Brighton inbound for Eastham on 25/1/23. Malta flag. Besiktas Likid Tasimacilik Denizcilik Ticaret AS, as managers. Ex-FETEKÖZ-'18, KARAGÖL-'09. Launched as NAZLIM-'07. IMO 9369928. Photo Alan Lee.

CATHY THERESA '11/5706, a Chemical/Products Tanker shown from the Pier Head inbound for Eastham on 10/1/23. Denmark International flag. Herning Shipping AS, as managers. IMO 9478315. Photo Howard h.





CENTAURUS '09/1262, an Ocean Tug shown from New Brighton inbound in the Mersey on 20/1/23. Antigua & Barbuda flag. Marlow Ship Management Deutschland GmbH & Co KG, as managers. IMO 9433755. Photo Dave Pearson.

EAGLE BLANE '20/85745, a Shuttle Tanker shown from Seacombe outbound from Tranmere Oil Terminal for Le Havre, France on 26/1/23. Norway International flag. AET Sea Shuttle II AS. IMO 9833101. Photo Alan Lee.





ENDURO TRADER '20/36106, a Bulk Carrier shown from New Brighton inbound for Liverpool on 21/1/23 to load Scrap Metal. Panama flag. Ratu Shipping Co SA.
IMO 9856282. Photo Dave Pearson.

FOYLE '05/3171, a Bunkering Tanker shown from the Pier Head outbound from Eastham on 6/1/23. Malta flag. Besiktas Likid Tasimacilik Denizcilik Ticaret AS, as managers. Ex-FIRDES-'20, RN OLYMP-'19, FIRDES-'13. Converted from a Chemical/Products Tanker in 2015. IMO 9317676. Photo Howard h.





JS ALULAR '12/5036, a Liquefied Petroleum Gas Tanker shown from the Pier Head inbound for Eastham on 6/1/23. Singapore flag. Greenship Offshore Manager Pte Ltd, as managers. IMO 9578012.
Photo Howard h.

PENHAR '10/4106 a General Cargo Ship shown from the Pier Head outbound from Birkenhead on 6/1/23. Netherlands flag. Vertom UCS Holding BV, as managers. Ex-CFL PENHAR-'15. IMO 9534365.
Photo Howard h.





SANDRA '09/8604, a General Cargo Ship shown from New Brighton inbound for Birkenhead on 14/1/23, with Urea from Egypt. Liberia flag. Intresco Ltd-BVI, as managers. Ex-BALTIC PRINCESS-'19, BENEDITO-'17, SUNFLOWER E-'15.

IMO 9549669.

Photo Dave Pearson.

SCARLATTI '22/3300, a Chemical/Products Tanker shown from New Brighton inbound for Eastham on 12/1/23. Cyprus flag. Scarlatti Tanker GmbH & Co KG. Built in China.

IMO 9866976.

Photo Dave Pearson.





SEATRUCK PENNANT '09/14759, a Ro-Ro Cargo Ship shown from New Brighton inbound for Liverpool from Dublin on 21/1/23. Cyprus flag. CLdN Ro-Ro S.A. Ex-CLIPPER PENNANT-'22. Launched as CLIPPER PANORAMA-'09. IMO 9372688.

Photo Alan Lee.

SINDRE KNUTSEN '22/85504, a Shuttle Tanker shown passing Seacombe inbound for Tranmere Oil Terminal from Stora, Norway on 29/1/23. Norway International flag. Knutsen NYK Offshore Tankers As, as managers. IMO 9905928.

Photo Alan Lee.





SOLONG '05/7852, a Container Ship shown from New Brighton outbound from Liverpool on 6/1/23. Portugal flag. Ernst Russ Maritime Management GmbH & Co KG. Ex-SLEIPNER-'16, HALLAND-'07. IMO 9322554. Photo Alan Lee.

THE CHIEF '13/10830, an Asphalt/Bitumen Tanker shown from Seacombe outbound from Eastham on 28/1/23. Marshall Islands flag. Trafigura Maritime Logistics Pte Ltd, as managers. Ex-PALANCA SINGAPORE-'19. IMO 9492361. Photo Alan Lee.





TOMINI UNITY '17/36415, a Bulk Carrier shown from New Brighton outbound from Liverpool for Antwerp, Belgium on 23/1/23. Marshall Islands flag. Tomini Transport LLC. IMO 9718167. Photo Dave Pearson.

WHITSTAR '04/2159, a Products Tanker shown from New Brighton inbound for Liverpool on 20/1/23. United Kingdom flag. John H Whitaker (Tankers) Ltd. Ex-BORDER HEATHER-'10. IMO 9287833. Photo Dave Pearson.

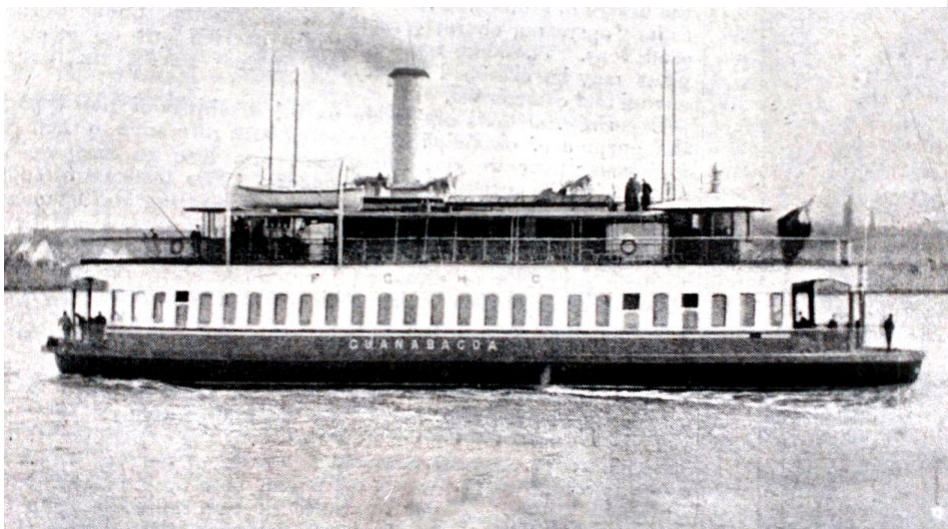


SHIPS FROM THE DISTANT PAST



GALWAY BAY '30/702, a Ferry shown at Galway in 1969. Ireland flag. Galway Ferries Ltd. Built at Woolston by Thornycroft as CALSHOT until 1964. Re-engined and converted from Tug/Tender in 1964. Sold on in 1990, renamed CALSHOT and preserved at Southampton. IMO 5058155. Photo Ron Lee.

GUANABACOA 1909/389, a Passenger Ferry shown on trials in the River Mersey in 1909. Cuba flag. Built by Cammell Laird & Co. Deleted in 1962 - no trace. Miramar ID 5607839. Photo "Engineering" magazine 1909/Alan Lee collection.



SHIPS FROM THE DISTANT PAST



MANCHESTER EXPORTER '52/7503, a Refrigerated/General Cargo Ship shown approaching Eastham Locks in 1966. United Kingdom flag. Manchester Liners Ltd. Built at West Hartlepool by William Gray & Sons as CAIRNDHU until 1965. Sold on in 1970. Broken-up at Kaohsiung in 1971. LR/IMO 5057254.

Photo Des Harris/M Cranfield collection.

STRATHEDEN '37/23722, a Passenger Ship shown berthed at Tilbury Landing Stage during 4/59. United Kingdom flag. Peninsular & Oriental Steam Navigation Co. Built at Barrow by Vickers Armstrongs Ltd. Sold on in 1964. Broken-up at La Spezia in 1969. LR/IMO 5342269.

Photo Malcolm Cranfield collection.



SHIPS FROM THE DISTANT PAST

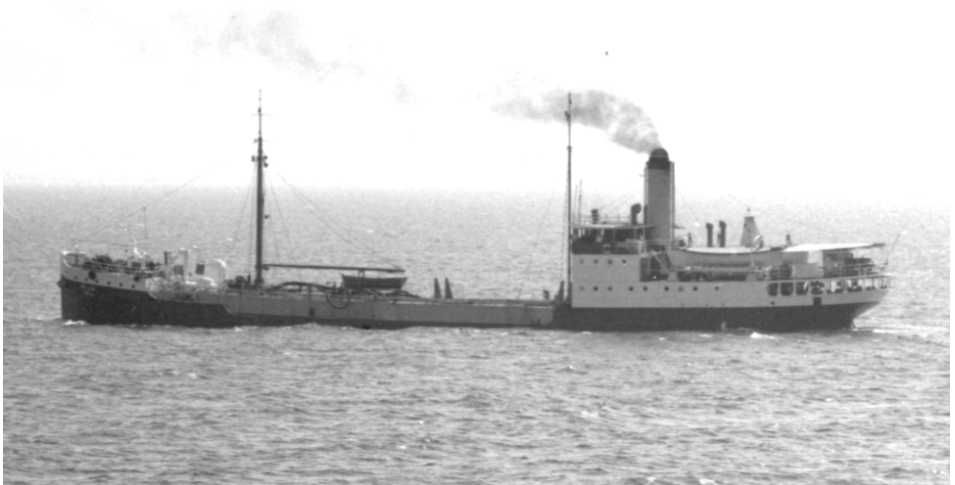


AMOY '40/5407, a General Cargo Ship shown at Hong Kong on 15/4/61. United Kingdom then Overseas (Hong Kong) flag. China Pacific Navigation Co Ltd. Built at Port Glasgow by Lithgows Ltd as HAVILDAR for Asiatic Steam Navigation Co Ltd until 1960. Sold on in 1965. Broken-up at Kaohsiung in 1966. Miramar ID 1167600.

Photo Dr George Wilson.

AMRYA '22/1142, a Tanker shown in the Gulf of Suez on 17/7/59. Egypt flag. Egyptian Government. Built in Netherlands as PRESIDENT BOLIVAR for Dutch Shell interests until 1932. Renamed DOLIUM until 1955. Became AMRYA (or styled AMREYAH) from 1956-60. Reverted to DOLIUM 1960-63. Sold on in 1963. Broken-up at Gadani Beach in 1988. LR/IMO 5422588.

Photo Dr George Wilson.



SHIPS FROM THE DISTANT PAST



AMAZON 59/20368, a Passenger//Refrigerated Cargo ship shown at Southampton on 13/7/65. United Kingdom flag. Royal Mail Lines Ltd. Built at Belfast by Harland and Wolff Ltd. Renamed AKAROA in 1968 and AKARITA in 1971. Sold on in 1977 and converted to a Vehicles Carrier. Broken-up at Kaohsiung in 1982. LR/IMO 5013648.

Photo Dr George Wilson.

ASUNCION '49/400, a General Cargo Ship shown passing Liverpool outbound on 22/4/53. Netherlands flag. NV Van Nievelt, Goudriaan & Co's Stoomvaart Maatschappij. Built as MATAR N until 1952. Sold on in 1955. Foundered Gulf of Oman 6/5/82. LR/IMO 5248566.

Photo Dr George Wilson.



SHIPS FROM THE DISTANT PAST



RAMON DE LARRINAGA '55/5818, a General Cargo Ship shown at Tema, Ghana in 1964. United Kingdom flag. Larrinaga Steamship Co Ltd of Liverpool. Sold on in 1969, and abandoned at Lisbon in 1976 after engine problems. Scuttled 1976.

LR/IMO 5289780.

Photo Norman Hesketh.

RAMON DE LARRINAGA '72/9181, a General Cargo Ship shown at Liverpool in 1972. United Kingdom flag. Larrinaga Steamship Co Ltd of Liverpool. Built at Sunderland as an SD14-type, by Austin & Pickersgill Ltd. Sold on in 1972. Broken-up at Alang, India in 1994. LR/IMO 7128734.

Photo Norman Hesketh.

